



STRONGHOLD

The GIS Integrated Security and Safety Management System

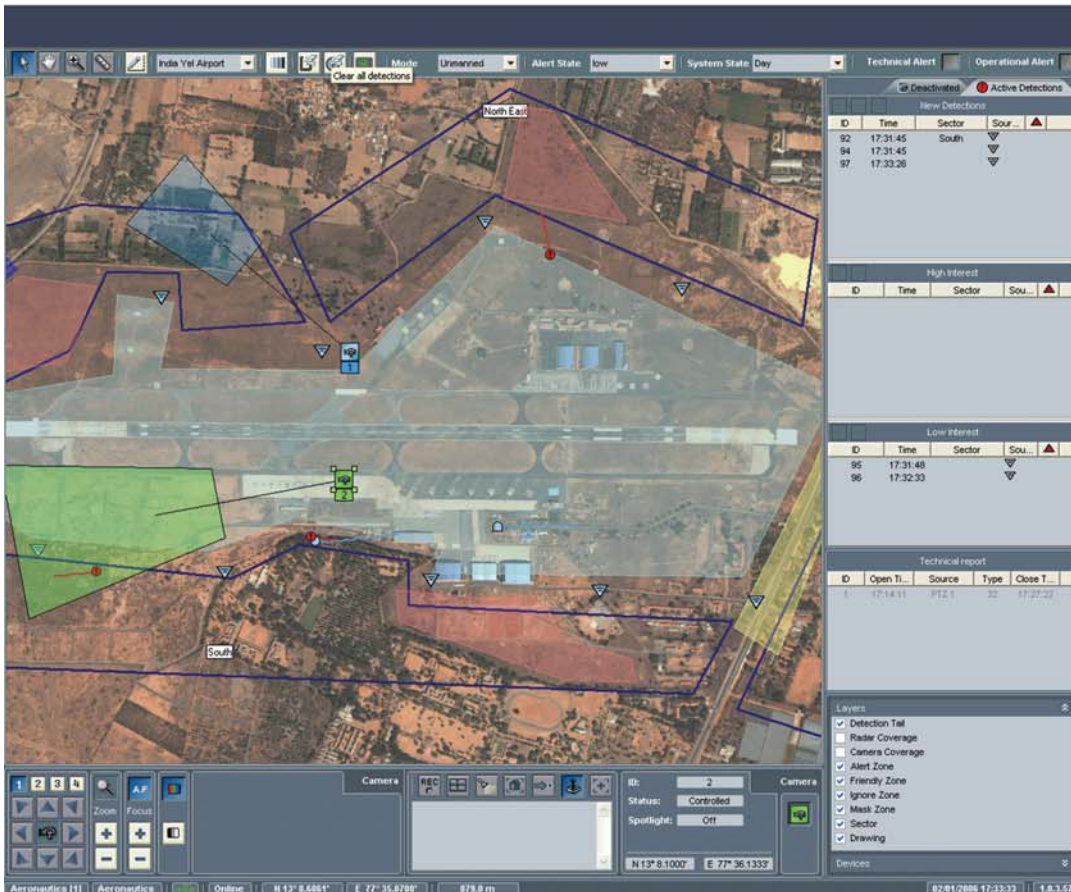
Aeronautics presents a revolutionary, mature and operational system for perimeter security which integrates all Detection, Control and Response parameters into a single C² management platform: Stronghold.



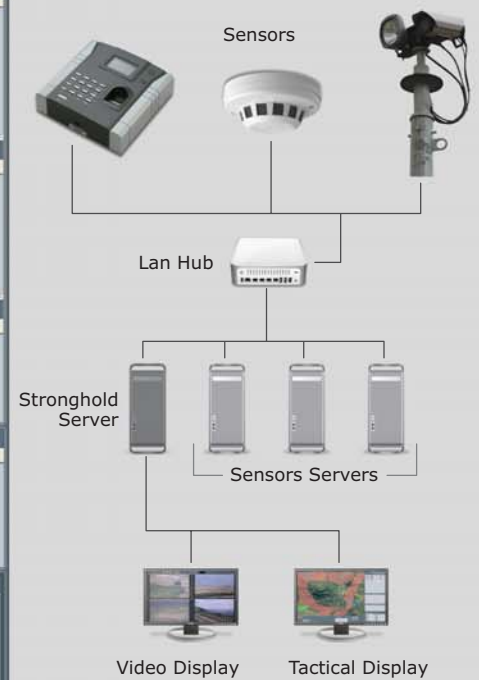
Stronghold C² Features

Interfaces with off-the-shelf or legacy security / safety equipment, including:

- CCTV fix / PTZ Surveillance cameras
- Motion Detection (MD) cameras and applications
- Video Analytics algorithms
- Radar / ultrasonic MD sensors
- Fence / barrier breach detectors
- Access control systems and alarm networks
- Smoke, heat or chemical detectors
- Searchlights
- Bidirectional Audio
- Dry-Contact inputs



STRONGHOLD - System Structure



STRONGHOLD MAIN FEATURES

- ❑ Displays only the relevant alarm positions and geographic coordinates on interactive digital GIS map or Aerial photo of site.
- ❑ Automatic direction and tracking of investigation cameras, spotlights etc towards detected alarm position. Displays the camera view on separate screen and camera field of view on the map.
- ❑ Other automatic effectors, such as door closing or sector isolation, can be included as required.
- ❑ Automatic alert of C² Security operator and wireless alert of mobile response team via Radio Communication, PDA, SMS or Pager.
- ❑ Automatic / manual synchronized recording and playback of all video and data of security/safety events, enabling dynamic visual playback for analysis, training etc. Uses DVtel Video Archiving server, or equivalent.
- ❑ Easily installed and integrated by site security contractor and readily compatible with all leading detection systems and effectors.
- ❑ Designed for minimum human operator intervention and can be operated by low-skilled personnel after very short training.
- ❑ Modular system design, adaptable to any type of site and security / safety setup.
- ❑ Reduces operators workload and false alarms by fully adjustable data filtering rules (e.g.: day/night modes, etc) and advanced event management scenarios.
- ❑ Full security advice and planning by experienced team on site.
- ❑ Readily upgradeable for site growth and technological advances.